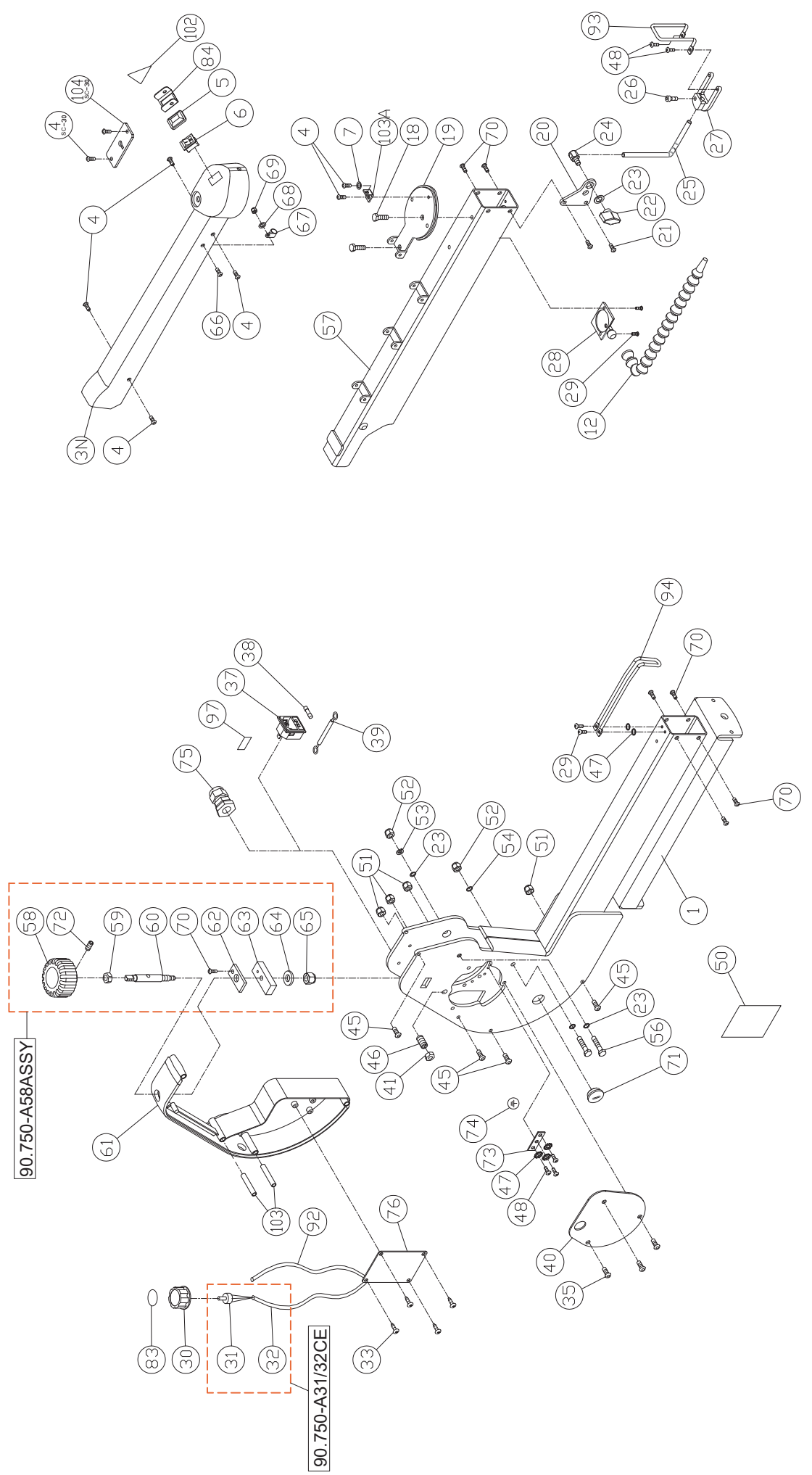


# DIAGRAM A



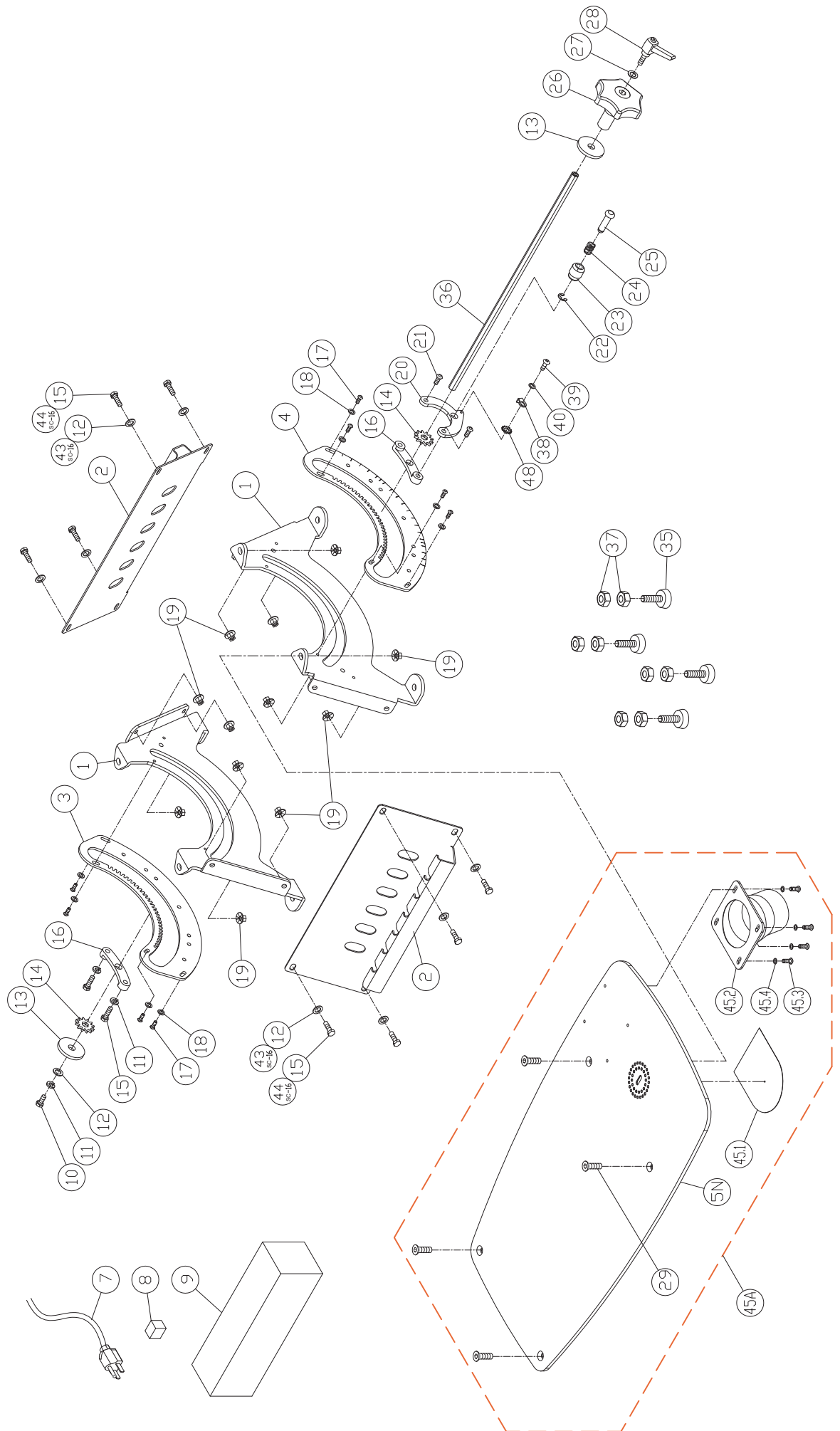
### Parts List -90.750

REF.	PART NO.	DESCRIPTION	SPECIFICATION	Q'ty
01	90.750-A01	Main Body		1
03N	90.750-A03N	Top Cover		1
04	90.750-A04	Allen Screw	#10-32x1/4"	6
05	90.750-A05	Switch Cover		1
06	90.750-A06	Switch		1
07	90.750-A07	Washer	M5	1
12	90.750-A12	Air Nozzle		1
18	90.750-A18	BOLT	1/4"-20x1/2"	2
19	90.750-A19	Upper & Lower Tension Plate		1
20	90.750-A20	Hold Down Mount Plate		1
21	90.750-A21	Allen Screw	#10-32x3/8"	2
22	90.750-A22	Hold Down Clamp Knob		1
23	90.750-A23	Washer	1/4"x16x1.8	4
24	90.750-A24	Hold Down Clamp Screw		1
25	90.750-A25	Hold Down Bar		1
26	90.750-A26	Cap Screw	#10-32x1/2"	1
27	90.750-A27	Hold Down Forks		1
28	90.750-A28	Dust Blower		1
29	90.750-A29	Tap Screw	#8-32UNF3/8"	4
30	90.750-A30	VR Knob		1
31	90.750-A31CE	VR		1
32	90.750-A32CE	Control Cable		1
31/32	90.750-A31/32CE	VR-With control cable		1
33	90.750-A33	Screw	M3.5x8	4
35	90.750-A35	Allen Screw	1/4"-20x1/2"	3
37	90.750-A37	Line Cord Socket		1
38	90.750-A38	Fuse		1
39	90.750-A39	Ground Jumper		1
40	90.750-A40	Gear Cover		1
41	90.750-A41	Nut	3/8"xT5.5	1
45	90.750-A45	Allen Screw	#10-32x2-1/4"	4
46	90.750-A46	Screw	3/8"x5/8	1
47	90.750-A47	Washer	#8	5
48	90.750-A48	Screw	#8-32x1/4"	5
50	90.750-50	ID Label		1
51	90.750-A51	Nylon Nut	#10-32	4
52	90.750-A52	Nylon Nut	1/4"-20UNC	2
53	90.750-A53	Lock Washer	1/4"	1
54	90.750-A54	Flat Washer	1/4"(O.D.13)	1
56	90.750-A56	Screw	1/4"*2-1/2"	2
57	90.750-A57	Upper Arm		1
58	90.750-A58	Knob		1
	90.750-A58ASSY	Upper arm rising knob assembly		

### Parts List -90.750

REF.	PART NO.	DESCRIPTION	SPECIFICATION	Q'ty
59	90.750-A59	Nut	M8	1
60	90.750-A60	Adjusting lever		1
61	90.750-A61	Control Box		1
62	90.750-A62	Cross Block Retainer		1
63	90.750-A63	Housing Cross Block		1
64	90.750-A64	Flat Washer	M6x16x2	1
65	90.750-A65	Nylon Nut	M6	1
66	90.750-A66	Allen Screw	#10-32x1/2"	1
67	90.750-A67	R Fastener	ACC2	1
68	90.750-A68	Washer	#10	1
69	90.750-A69	Nylon Nut	#10-32	1
70	90.750-A70	Allen Screw	#10-32x5/16"	7
71	90.750-A71	Button		1
72	90.750-A72	Set Screw	M4x5	1
73	90.750-A73	Ground Plate		1
74	90.750-A74	Ground Label		1
75	90.750-A75	Strain Relief	PG11	1
76	90.750-A76	Motor Control Set		1
83	90.750-A83	Label		1
84	90.750-A84	Switch Box		1
92	90.750-A92	Power Cord		1
93	90.750-A93	Protection bracket-Up		1
94	90.750-A94	Protection bracket-Down		1
97	90.750-A97	Fuseholder Label		1
102	90.750-A102	Warning Label		1
103	90.750-A103	Tube		2
103A	90.750-A103A	Bracket Protection bracket		1

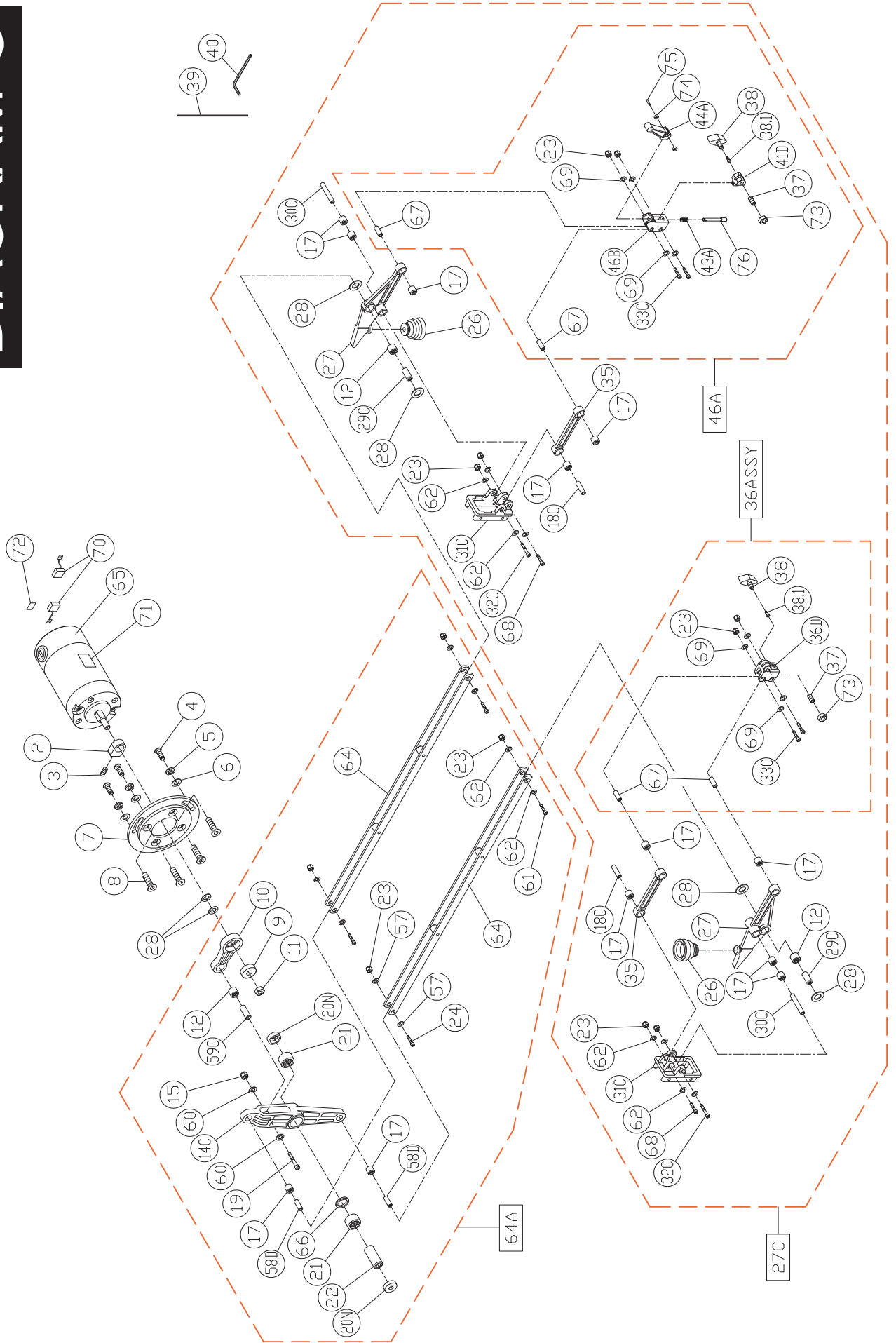
# DIAGRAM B



### Parts List -90.750

REF.	PART NO.	DESCRIPTION	SPECIFICATION	Q'ty
01	90.750-B01	Trunnion		2
02	90.750-B02	Side Panel		2
03	90.750-B03	Rear Trunnion Plate		1
04	90.750-B04	Front Trunnion Plate		1
05N	90.750-B05N	Table		1
07	90.750-B07	Power Cord		1
08	90.750-B08	Spong Block		1
09	90.750-B09	Polyfoam		1
10	90.750-B10	Screw	1/4"-20UNC*1/2"	1
11	90.750-B11	Lock Washer	1/4"	3
12	90.750-B12	Washer	1/4"	9
13	90.750-B13	Blade Tilt Washer		2
14	90.750-B14	Blade Tilt Drive Gear		2
15	90.750-B15	Screw	1/4"-20UNC*3/4"	10
16	90.750-B16	Angle Follower		2
17	90.750-B17	Screw	#10-32x5/16"	8
18	90.750-B18	Washer	#10x12x1	8
19	90.750-B19	Nut	1/4"-20UNC	12
20	90.750-B20	Angle Indicator		1
21	90.750-B21	Allen Screw	1/4"-20x1"	2
22	90.750-B22	E Ring	ETW-3	1
23	90.750-B23	Tilt Detent Barrel		1
24	90.750-B24	Spring		1
25	90.750-B25	Detent Plunger		1
26	90.750-B26	Tilt Handle		1
27	90.750-B27	Washer	1/4"x16X3	1
28	90.750-B28	Blade Tilt Locking Lever		1
29	90.750-B29	Flat Head Screw	1/4"-20x3/4"	4
35	90.750-B35	Leveling foot	3/8-16x1-1/4	4
36	90.750-B36	Tilt Lock Draw Rod		1
37	90.750-B37	Nut	3/8"-16UNC	8
38	90.750-B38	Pointer		1
39	90.750-B39	Round Head Screw	M4x6mm	1
40	90.750-B40	Washer	M4	1
43	SC16-B43	Washer	1/4"	8
44	SC16-B44	Allen Screw	1/4"-20UNC*3/4"	8
45A	90.750-B45A	Dust collector table kit		
45.1	90.750-B45.1	Plastic shroud		1
45.2	90.750-B45.2	Dust chute		1
45.3	90.750-B45.3	Round Head Screw	#8-32UNC-3/8"	4
45.4	90.750-B45.4	Washer	#8-32UNC	4
48	90.750-B48	External Tooth Washer	M4	1

# DIAGRAM C



### Parts List -90.750

REF.	PART NO.	DESCRIPTION	SPECIFICATION	Q'ty
02	90.750-C02	Balance Block		1
03	90.750-C03	Set Screw	M6*6	1
04	90.750-C04	Allen Screw	1/4"-20x1/2"	3
05	90.750-C05	Lock Washer	1/4"	3
06	90.750-C06	Flat Washer	1/4"x16x1.8	3
07	90.750-C07	Motor Cover Plate		1
08	90.750-C08	Screw	M6x16	4
09	90.750-C09	Bearing	608ZZ	1
10	90.750-C10	Motor Cam		1
11	90.750-C11	Nut	M8XP1.25 LH	1
12	90.750-C12	Bearing	HK0810	3
14C	90.750-C14C	Rocker Cam		1
15	90.750-C15	Lock Nut	M5	1
17	90.750-C17	Bearing	HK0609	12
18C	90.750-C18C	Inner Bearing Sleeve (KC30-C18C )	ψ6.03x21	2
19	90.750-C19	Cap Screw	M5*28	1
20N	90.750-C20N	Bearing Cover		2
21	90.750-C21	Bearing	HK1412	2
22	90.750-C22	Main Rocker Pivot	ψ14.04x35.5	1
23	90.750-C23	Nut	M4	12
24	90.750-C24	Cap Screw	M4*25	2
26	90.750-C26	Air Pump Bellows		2
27	90.750-C27	Front Rocker		2
27C	90.750-C27C	Upper and Lower rocker assembly		
28	90.750-C28	Washer	M8*15*0.6	6
29C	90.750-C29C	Inner Bearing Sleeve-Front Rocker	ψ8.03x18.40mm	2
30C	90.750-C30C	Bearing Inner Sleeve (KC30-C30C)	ψ6.03x37mm	2
31C	90.750-C31C	Rocker Mount(KC30-C31C)		2
32C	90.750-C32C	Cap Screw	M4*45	2
33C	90.750-C33C	Cap Screw	M4*24	4
35	90.750-C35	Strut		2
36D	90.750-C36D	Blade Chuck		1
36ASSY	90.750-C36ASSY	Blade Chuck bottom assembly		
37	90.750-C37	Set Screw	M6*14	2
38	90.750-C38	Blade Clamp Thumb screw		2
38.1	90.750-C38.1	Thumb Screw Swivel		2
39	90.750-C39	Blade		1
40	90.750-C40	Allen Key	3MM	1
41D	90.750-C41D	Clamp Bracket		1
43A	90.750-C43A	Spring		1
44A	90.750-C44A	Tension Lever		1
46B	90.750-C46B	Sliding Bracket		1
46A	90.750-C46A	Upper blade tension assembly		
57	90.750-C57	Washer	M4x10x1	4
58D	90.750-C58D	Inner Bearing Sleeve	ψ6.03 x 16.5mm	2
59C	90.750-C59C	Bearing Inner Sleeve	ψ8.03 x 21.5mm	1
60	90.750-C60	Washer	M5	2
61	90.750-C61	Cap Screw	M4*27	2

REF.	PART NO.	DESCRIPTION	SPECIFICATION	Q'ty
62	90.750-C62	Washer	M4x14x1.2	12
64	90.750-C64	Drive link Assy		2
64A	90.750-C64A	Complete drive link Ass'y		
65	90.750-C65	Motor		1
66	90.750-C66	Espaceur		1
67	90.750-C67	Cylinder internet du roulement (KC30-C67)	ψ6.03x16mm	4
68	90.750-C68	Cap Screw	M4x30	2
69	90.750-C69	Rondelle	M4*8*1	8
70	90.750-C70	Brosse du moteur		2
71	90.750-C71	Motor Label		1
72	90.750-C72	Black Label		1
73	90.750-C73	Nut	M6	2
74	90.750-C74	Sleeve for Handle		2
75	90.750-C75	Axis For Handle		1
76	90.750-C76	Axis Of Tension		1